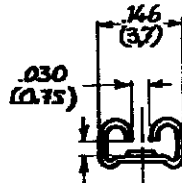
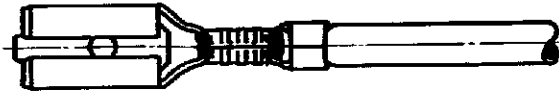


DRAWING MADE IN AMERICAN PROJECTION

NUMBER C-160533



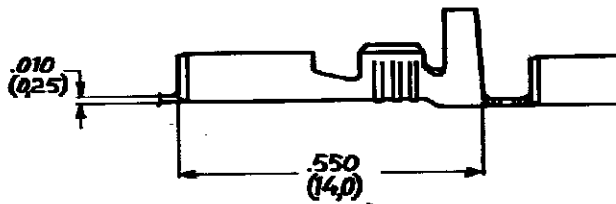
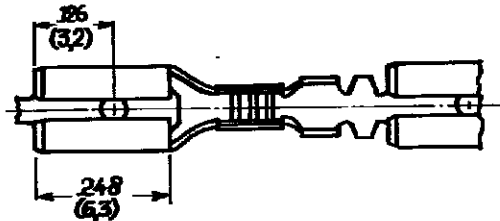
FOR .020 TAB-THICKNESS
(.05)



CHAMFER AROUND FRONT OF RECEPTACLE

.020 MAX
(.05)

.020 MAX
(.05)



▲ BRIGHT PRE-TINPLATED

DIMENSIONS IN (IN.) DO NOT SCALE PRINT

| | | |
|-----------|--------------|---------|
| 160533-0 | PHOS. BRONZE | ▲ |
| 160533-9 | PHOS. BRONZE | PRE-TIN |
| | | |
| | | |
| 160533-5 | PHOS. BRONZE | TIN |
| 160533-4 | PHOS. BRONZE | --- |
| 160533-3 | BRASS | SILVER |
| 160533-2 | BRASS | TIN |
| 160533-1 | BRASS | --- |
| ORDER NO. | MATERIAL | PLATING |

CUSTOMER COPY FOR REFERENCE ONLY

©1975 BY AMP-HOLLAND N.V. ALL RIGHTS RESERVED A-MP PRODUCTS COVERED BY PATENTS AND/OR PATENTS PENDING.



AMP-HOLLAND N.V.
1-HERTOGENBOSCH
HOLLAND

| | | |
|-------------------------------|--|------------|
| WIRE RANGE 26-16 20 AWG | INSUL. RANGE 200-120 DIA (.8-.2) | FIRST USED |
| SCALE 4=1 | LOC H | SIZE A |
| NO C-160533 | | REV F |

NAME 110 Ser FASTON RECEPTACLE

| | |
|----------------|----------------|
| DATE 3/1-79 | DATE 2-2-84 |
| DATE 3/1/79 | DATE 2-2-84 |